

Igor Stravinsky
L'Histoire du Soldat

Bassoon. Marche du Soldat

$\text{♩} = 112$

1

2

3 *f*

4 *p*

5 *Solo* *f*

6

7

8 *f*

9

10

11

12

13

14

15

16

17

18

19 *ff*

Musique de la 2^{ème} Scène

lento (♩ = 48) (♩ = ♩ sempre)

SCENE III

SCENE III

♩ = 100

Musical score for the first part of Scene III. It consists of four staves. The first staff is in 9/4 time, the second in 9/8, the third in 2/5, and the fourth in 2/4. The music features complex rhythmic patterns, including rests, eighth notes, and sixteenth notes, with various accidentals (sharps and naturals). There are also some markings above the notes, possibly indicating fingerings or articulation.

Part II

♩ = 112

Musical score for Part II, consisting of six staves. The first staff is in 9/4 time, the second in 9/8, the third in 9/8, the fourth in 9/4, the fifth in 12/8, and the sixth in 12/8. The music features complex rhythmic patterns, including rests, eighth notes, and sixteenth notes, with various accidentals (sharps and naturals). There are dynamic markings such as *f* and *sf*. There are also numbered first endings (1, 2, 3, 4) indicated by boxes above the notes. The score includes various musical notations like slurs, accents, and fermatas.

Musical score for the first section of the piece. It consists of two staves. The first staff has a treble clef and a key signature of one flat. The second staff has a bass clef and a key signature of one flat. The music features various rhythmic patterns, including eighth and sixteenth notes, and rests. Dynamic markings include *mf*, *f*, *pp sub.*, and *poco cresc.*. There are also boxed numbers 5, 6, 7, 8, and 9 indicating specific measures or phrases.

MARCHE ROYALE

$\text{♩} = 112$

Musical score for the 'MARCHE ROYALE' section. It consists of two staves. The first staff has a treble clef and a key signature of one flat. The second staff has a bass clef and a key signature of one flat. The music features a steady rhythmic pattern of eighth notes. Dynamic markings include *mf*, *sub meno f*, *f*, *P*, *sf*, and *sub meno f*. There are also boxed numbers 1, 2, 3, and 4 indicating specific measures or phrases.

5

6

7

8

9

10

11 simile

12

13

14

p

mf

f

cresc

solo

ff

f

molto - p

8

9

en dehors (Vla I)

f

10

11

12

13

14 dolce

15

16

17 (solo)

18

19

meno f aut.

20

p

Musical score for three staves, measures 21-29. The notation includes various rhythmic values, accidentals, and dynamic markings. Measure 21 starts with a forte (*f*) dynamic and a slur over the first few notes. Measure 22 includes a piano (*p*) dynamic and the instruction *simile*. Measure 23 features a forte (*f*) dynamic with *stacc e marc.* (staccato and marcato). Measure 24 has a piano (*p*) dynamic with *sub.* (subito). Measure 25 includes a sforzando (*sf*) dynamic. Measure 26 has a sforzando (*sfz*) dynamic. Measure 27 includes a piano (*p*) dynamic. Measure 28 has a sforzando (*sfz*) dynamic. Measure 29 includes a sforzando (*sfz*) dynamic and a *Vlo* (Violoncello) marking.

TROIS DANSES

1 Tango tacet

2 Valse

11

(11 Waltz)

10

♩ = 184-192



11

pp *leggierissimo*



12



13

f

14

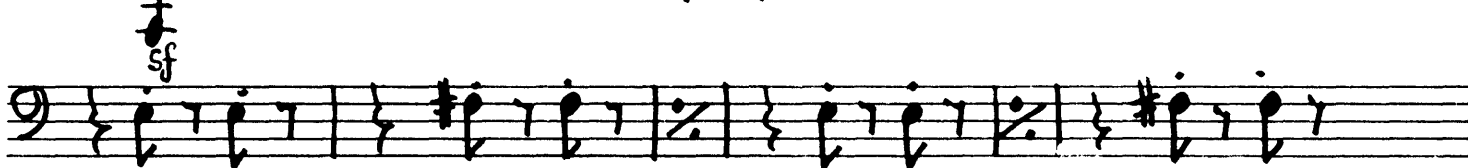
pp sub.



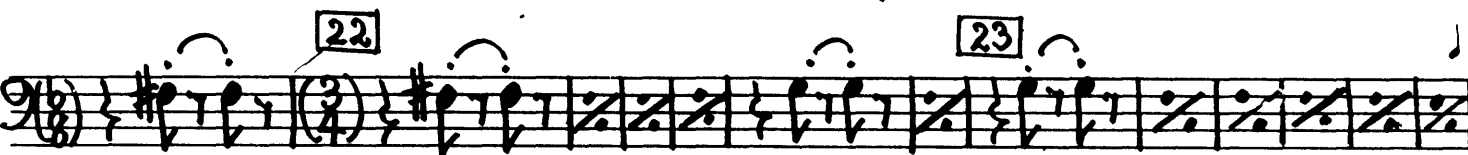
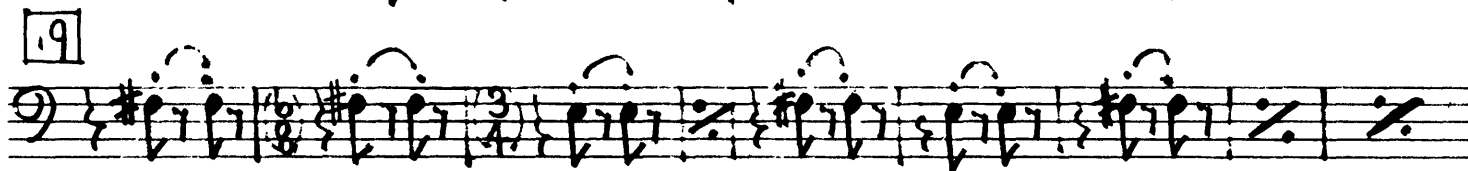
15



16



sf



poco a poco cresc.

3 Ragtime

24

VL

25

26

27

3 16

marc.

simi

28

29

30

31 stacc.

f en dehors

P leggero

32

33

34

Musical score for Trombone, measures 35-37. The score is in G major and 2/4 time. Measure 35 is marked with a box containing the number 35 and the tempo marking *marc*. Measure 36 is marked with a box containing the number 36 and the dynamic marking *f*. Measure 37 is marked with a box containing the number 37. The score includes various rhythmic values and articulation marks.

Danse du Diable

Musical score for *Danse du Diable*, measures 136-140. The score is in G major and 2/4 time. Measure 136 is marked with a box containing the number 1 and the tempo marking *Allegro*. Measure 137 is marked with a box containing the number 2 and the dynamic marking *sempre ff*. Measure 138 is marked with a box containing the number 3 and the dynamic marking *mf*. Measure 139 is marked with a box containing the number 4. The score includes various rhythmic values and articulation marks.

Musical score for the first section of the page. It consists of seven staves. The first staff shows rhythmic patterns with time signatures 3/8, 2/4, 3/8, 1/4, 3/8, 1/4, 4/8, and 3/8. The second staff has a dynamic marking 'p' and includes notes with accidentals. The third staff has a dynamic marking 'f' and includes notes with accidentals. The fourth staff has a dynamic marking 'f' and includes notes with accidentals. The fifth staff has a dynamic marking 'meno f' and includes notes with accidentals. The sixth staff has a dynamic marking 'sf p subito' and includes notes with accidentals. The seventh staff is a single note with a dynamic marking 'sf'.

Largo (♩=54) Petit Choral

Musical score for the 'Petit Choral' section. It consists of two staves. The first staff has a time signature of 3/4 and includes notes with accidentals. The second staff has a time signature of 3/4 and includes notes with accidentals.

Couplet du Diable tacet

Grand Choral

Largo ♩ = 54

Grand Choral

Musical score for Grand Choral, measures 1-10. The score is written in 4/4 time with a key signature of one sharp (F#). It features a vocal line and a piano accompaniment. The piano part includes dynamic markings such as *f*, *meno f*, *p*, and *pp*. There are four numbered rehearsal marks (1, 2, 3, 4) placed above the piano staff. The vocal line consists of a single melodic line with various note values and rests.

Marche Triomphale du Diable

♩ = 112

Musical score for Marche Triomphale du Diable, measures 1-4. The score is written in 3/4 time with a key signature of one sharp (F#). It features a piano accompaniment with a rhythmic pattern of eighth notes. There are two numbered rehearsal marks (1, 2) placed above the piano staff. The score includes various time signatures such as 3/4, 5/8, and 3/4.

