

Marc-Antoine Charpentier

**“Assumpta est Maria”**

*Missa sex vocibus cum simphonia*

H. 11

**“Transfige dulcissime Jesu”**

*Elevation a 5 sans dessus de violon*

H. 251

# Assumpta est Maria

missa sex vocibus cum simphonia  
H. 11

Marc-Antoine Charpentier  
(1643-1704)

## Simphonia

7  
2-8  
tous

13

20

26

32

39

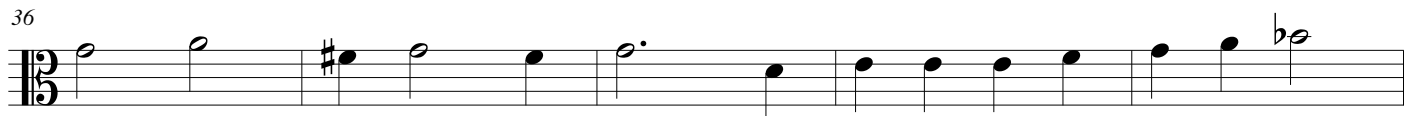
## Kyrie

13  
1-13  
tous

21



28-31



# Christe

l'orgue Joue icy un couplet

**33**



1-33

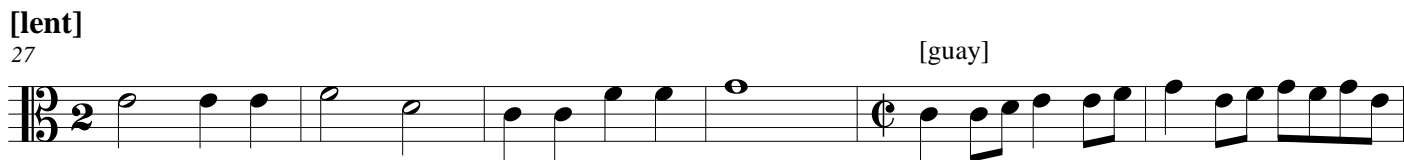
Ici lon rejoue  
La Symphonie de  
devant le Kyrie  
Puis lon reprend  
le Kyrie

# Gloria

Le celebrant entonne le Gloria



# Suite



33

A single musical staff with a treble clef, containing a series of notes including an eighth-note triplet, followed by quarter and eighth notes, ending with a half note and a whole note.

40

A single musical staff with a treble clef, starting with an eighth-note triplet, followed by quarter notes and half notes, ending with a quarter note and a half note.

46

A single musical staff with a treble clef, containing a sequence of quarter and half notes, with some notes marked with accidentals (sharps and flats).

53

A single musical staff with a treble clef. The first measure contains a whole note marked with a sharp sign. This is followed by a rest for 21 measures, indicated by a thick horizontal line with the number '21' above it. The staff then continues with quarter notes and is labeled with the word 'tous' above the final measure.

79

A single musical staff with a treble clef, featuring a melody of quarter and eighth notes with various accidentals.

88

A single musical staff with a treble clef, containing a sequence of quarter notes and half notes, with a sharp sign above the second measure.

95

A single musical staff with a treble clef. The first measure contains a whole note marked with a sharp sign. This is followed by a rest for 4 measures, indicated by a thick horizontal line with the number '4' above it. The staff then continues with quarter notes and is labeled with the number '98-101' below the rest.

104

A single musical staff with a treble clef, featuring a melody of quarter and eighth notes with various accidentals.

111

A single musical staff with a treble clef, containing a sequence of quarter notes and half notes, with a flat sign above the second measure.

118

A single musical staff with a treble clef, containing a sequence of quarter notes and half notes, ending with a sharp sign and a double sharp sign above the final two notes.

# Suite

5 12 tous

123-127 128-139

143

148

153 Div.

158

163

168

# Credo

Le celebrant entonne  
le Credo in unum Deum

9

15

22

30

37

72

77

85

92

99

100-102

Passez a la Suite  
apres un grand silence

10 9 23 15

108-117 118-126 127-149 150-164

166

173

179

187

195

Suivez

21

201-221

225

230

234

238

242

### Simphonie Devant le Sanctus

8

13

19

Passez au Sanctus



# Sanctus

Tous

6 [guay]

14 [grave]

23 [guay]

30

# Simphonie devant et apres L'Agnus Dei

Tous

6

13

18

Suivez a l'Agnus Dei a laise

# Agnus Dei

Tous

2

9

16

# Domine Salvum

